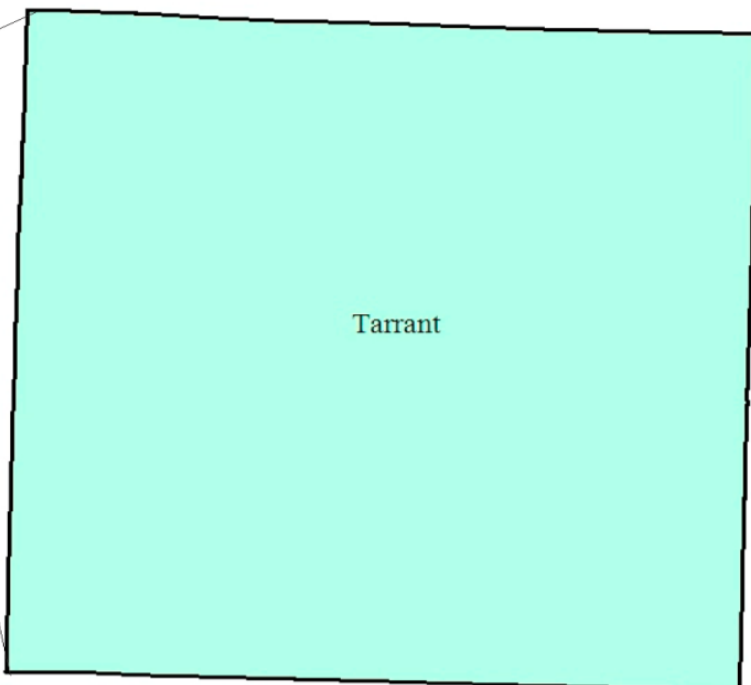


Tarrant County Workforce Development Area

October 2016



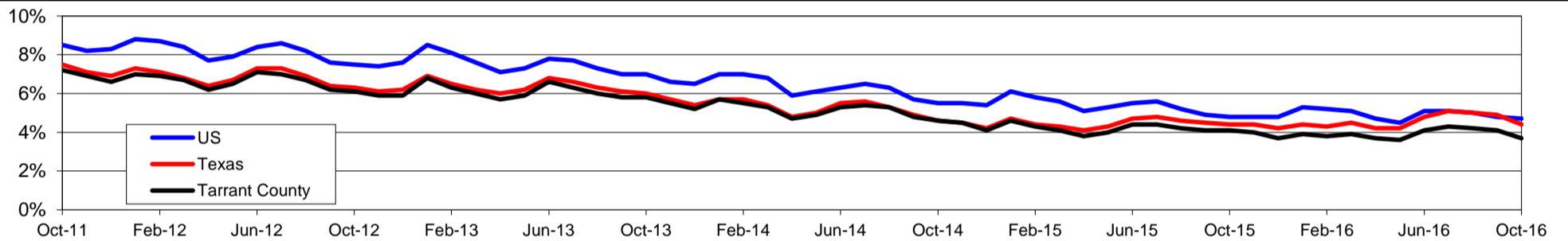
WDA Labor Force Statistics				
	Oct-16	Sep-16	Oct-15	OTY
CLF	1,017,622	1,024,023	994,089	23,533
Employed	979,815	981,600	953,487	26,328
Unemployed	37,807	42,423	40,602	-2,795
Rate	3.7%	4.1%	4.1%	-0.4%

Texas Labor Force Statistics				
	Oct-16	Sep-16	Oct-15	OTY
CLF	13,334,556	13,416,525	13,114,424	220,132
Employed	12,749,778	12,754,630	12,531,868	217,910
Unemployed	584,778	661,895	582,556	2,222
Rate	4.4%	4.9%	4.4%	0.0%

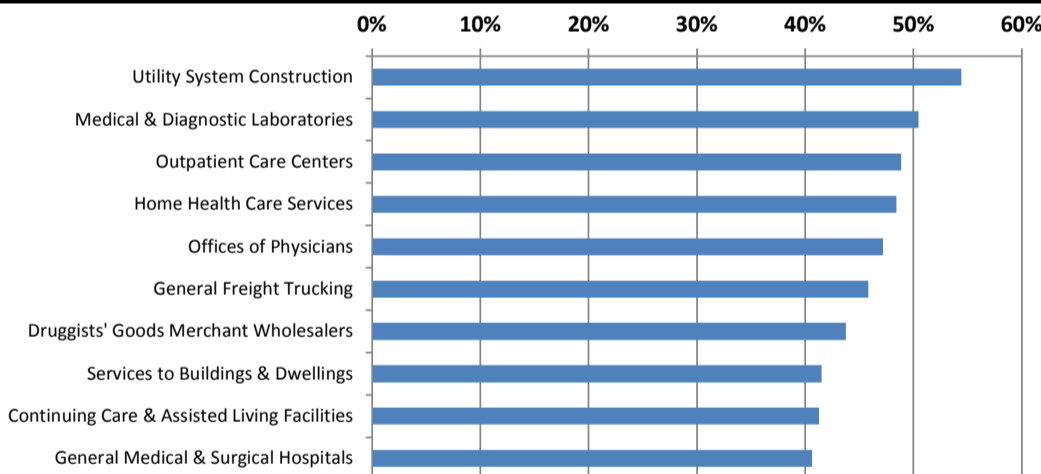
US Labor Force Statistics				
	Oct-16	Sep-16	Oct-15	OTY
CLF	159,783,000	159,636,000	157,313,000	2,470,000
Employed	152,335,000	151,977,000	149,716,000	2,619,000
Unemployed	7,447,000	7,658,000	7,597,000	-150,000
Rate	4.7%	4.8%	4.8%	-0.1%

Continued Claims for the Week of the 12th				
	Oct-16	Sep-16	Oct-15	OTY
WDA	7,247	7,723	8,646	-1,399
Texas	123,806	133,309	129,360	-5,554

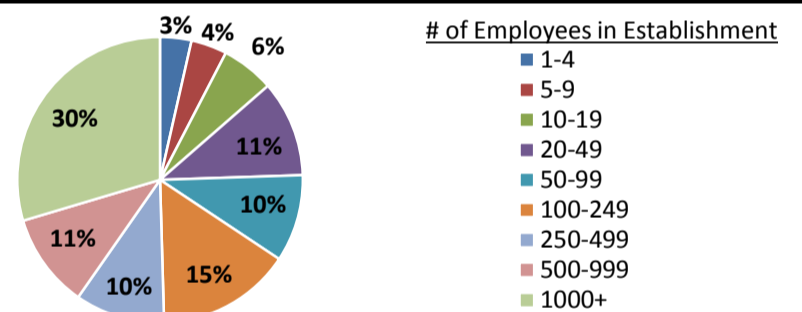
Historical Unemployment Rates



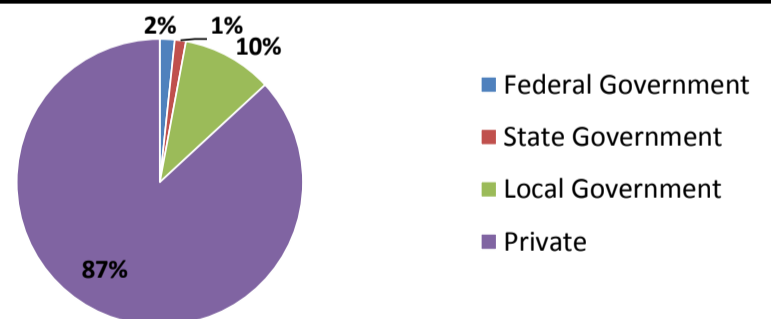
Projected Fastest Growing Industries in WDA (% growth 2014-2024)



Employment by Size Class (2nd Quarter 2016)



Employment by Ownership (2nd Quarter 2016)



Average Weekly Wage (2nd Quarter 2016)

	Q2 2016	Q1 2016	Q2 2015	Change	
				Quarter	Year
WDA	\$972	\$999	\$963	-\$27	\$9
Texas	\$1,000	\$1,063	\$989	-\$63	\$11
US	N/A	\$1,083	\$1,048	N/A	N/A

Employment by Industry (2nd Quarter 2016, Percent Change)

Industry	Employment	% of total	% Change	
			Quarter	Year
Natural resources and mining	8,602	1.0%	-5.3%	-15.1%
Construction	48,076	5.6%	3.4%	7.2%
Manufacturing	80,360	9.4%	-0.8%	-3.7%
Trade, transportation and utilities	210,987	24.7%	1.1%	2.4%
Information	11,053	1.3%	2.6%	-2.1%
Financial activities	52,175	6.1%	0.7%	3.2%
Professional and business services	99,967	11.7%	1.3%	0.3%
Education and health services	183,356	21.5%	0.6%	2.9%
Leisure and hospitality	106,010	12.4%	7.7%	2.3%
Other services	25,611	3.0%	2.3%	-1.3%
Public administration	27,668	3.2%	0.5%	1.7%
Total	853,865	100.0%	1.7%	1.5%

Employment by Industry (2nd Quarter 2016)

