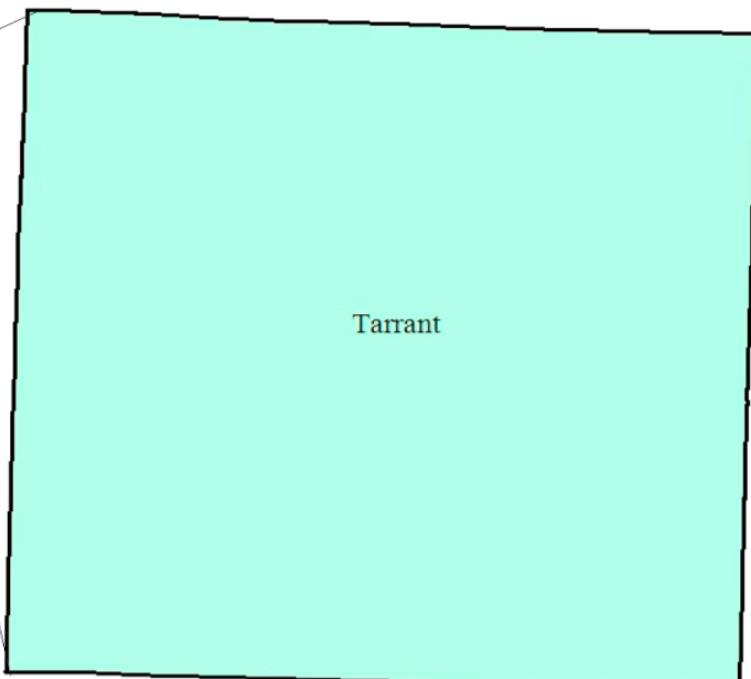


Tarrant County Workforce Development Area

March 2017



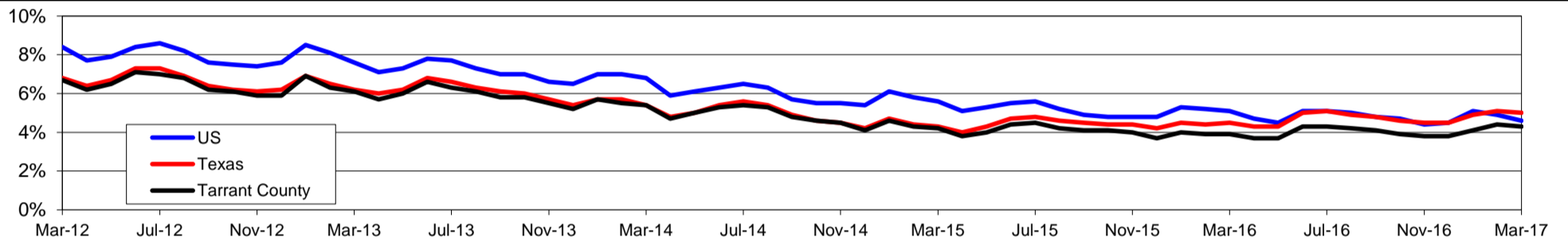
WDA Labor Force Statistics				
	Mar-17	Feb-17	Mar-16	OTY
CLF	1,029,514	1,025,726	999,489	30,025
Employed	984,994	980,819	960,515	24,479
Unemployed	44,520	44,907	38,974	5,546
Rate	4.3%	4.4%	3.9%	0.4%

Texas Labor Force Statistics				
	Mar-17	Feb-17	Mar-16	OTY
CLF	13,513,734	13,471,275	13,239,718	274,016
Employed	12,838,130	12,777,787	12,648,877	189,253
Unemployed	675,604	693,488	590,841	84,763
Rate	5.0%	5.1%	4.5%	0.5%

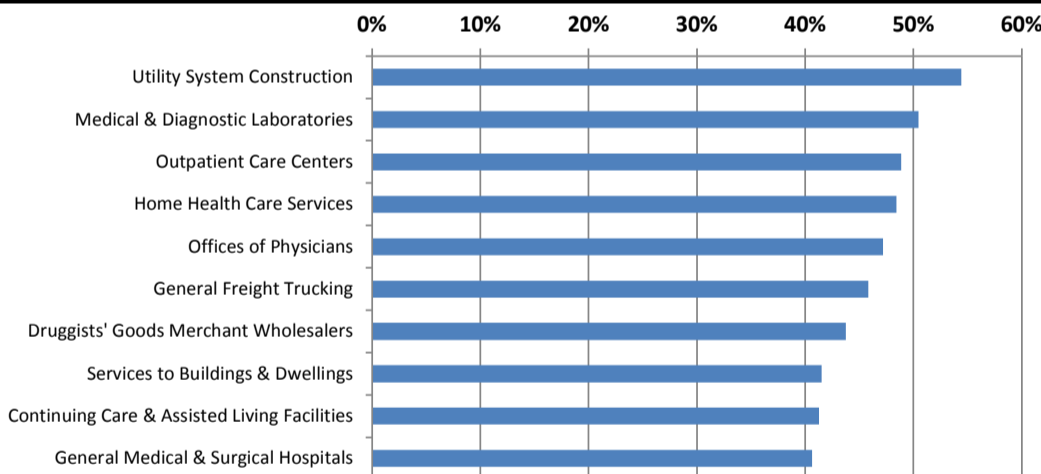
US Labor Force Statistics				
	Mar-17	Feb-17	Mar-16	OTY
CLF	159,912,000	159,482,000	158,854,000	1,058,000
Employed	152,628,000	151,594,000	150,738,000	1,890,000
Unemployed	7,284,000	7,887,000	8,116,000	-832,000
Rate	4.6%	4.9%	5.1%	-0.5%

Continued Claims for the Week of the 12th				
	Mar-17	Feb-17	Mar-16	OTY
WDA	8,079	7,758	8,571	-492
Texas	122,950	132,086	145,342	-22,392

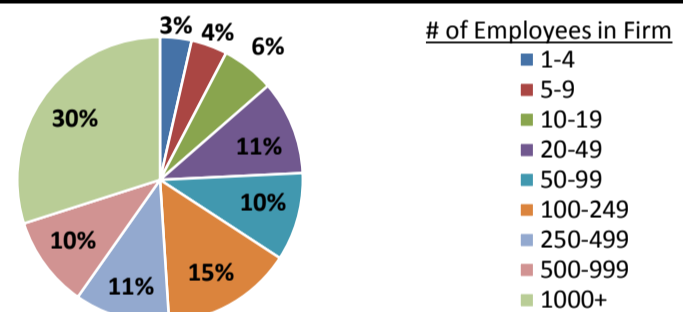
Historical Unemployment Rates



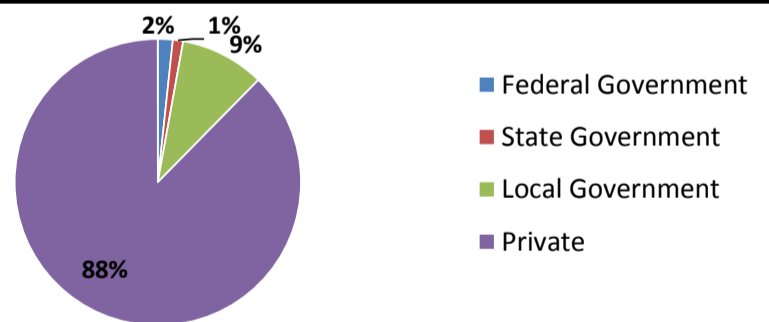
Projected Fastest Growing Industries in WDA (% growth 2014-2024)



Employment by Size Class (3rd Quarter 2016)



Employment by Ownership (3rd Quarter 2016)



Average Weekly Wage (3rd Quarter 2016)

	Q3 2016	Q2 2016	Q3 2015	Change	
				Quarter	Year
WDA	\$1,029	\$971	\$968	\$58	\$60
Texas	\$1,042	\$1,000	\$999	\$42	\$43
US	\$1,027	\$988	\$974	\$39	\$53

Employment by Industry (3rd Quarter 2016, Percent Change)

Industry	Employment	% of total	% Change	
			Quarter	Year
Natural resources and mining	8,159	1.0%	-4.8%	-16.7%
Construction	49,447	5.8%	2.7%	8.2%
Manufacturing	80,956	9.4%	0.7%	-1.7%
Trade, transportation and utilities	216,881	25.3%	1.9%	3.6%
Information	10,746	1.3%	-2.8%	-3.9%
Financial activities	52,607	6.1%	0.9%	2.7%
Professional and business services	100,905	11.8%	1.0%	-0.7%
Education and health services	177,709	20.7%	-3.1%	2.2%
Leisure and hospitality	106,307	12.4%	0.2%	2.3%
Other services	25,408	3.0%	-0.9%	-2.7%
Public administration	27,761	3.2%	0.3%	2.3%
Total	856,886	100.0%	0.1%	1.7%

Employment by Industry (3rd Quarter 2016)

