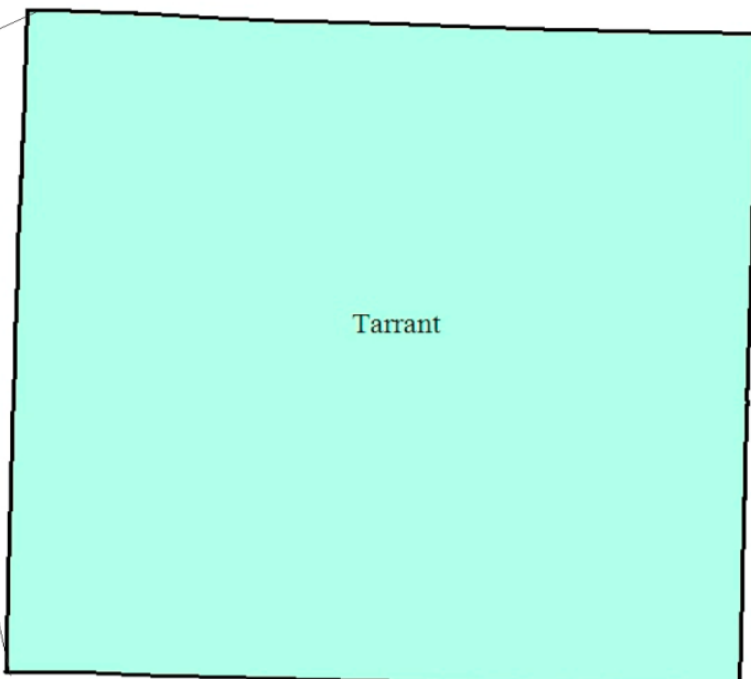


# Tarrant County Workforce Development Area

February 2017



### WDA Labor Force Statistics

	Feb-17	Jan-17	Feb-16	OTY
CLF	1,026,290	1,019,217	996,021	30,269
Employed	981,715	977,418	957,313	24,402
Unemployed	44,575	41,799	38,708	5,867
Rate	4.3%	4.1%	3.9%	0.4%

### Texas Labor Force Statistics

	Feb-17	Jan-17	Feb-16	OTY
CLF	13,466,399	13,356,586	13,185,966	280,433
Employed	12,777,968	12,695,730	12,604,648	173,320
Unemployed	688,431	660,856	581,318	107,113
Rate	5.1%	4.9%	4.4%	0.7%

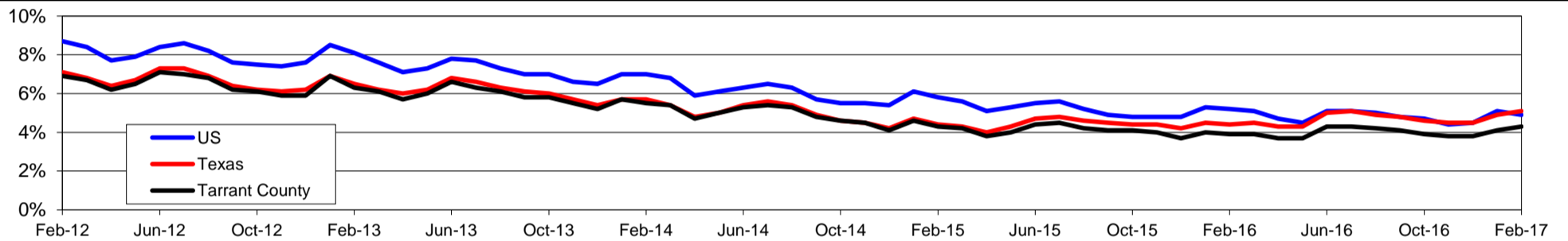
### US Labor Force Statistics

	Feb-17	Jan-17	Feb-16	OTY
CLF	159,482,000	158,676,000	158,279,000	1,203,000
Employed	151,594,000	150,527,000	150,060,000	1,534,000
Unemployed	7,887,000	8,149,000	8,219,000	-332,000
Rate	4.9%	5.1%	5.2%	-0.3%

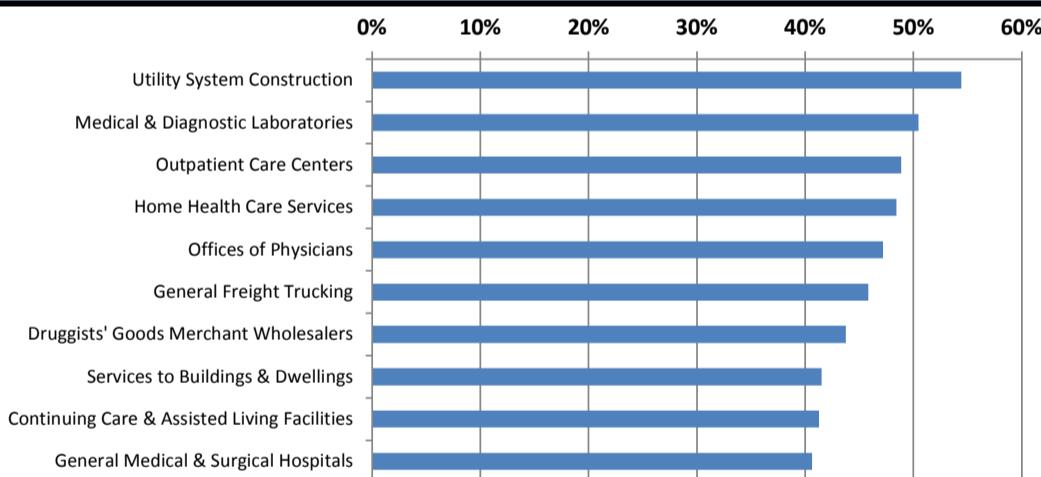
### Continued Claims for the Week of the 12th

	Feb-17	Jan-17	Feb-16	OTY
WDA	7,680	7,674	8,590	-910
Texas	122,950	132,086	145,342	-22,392

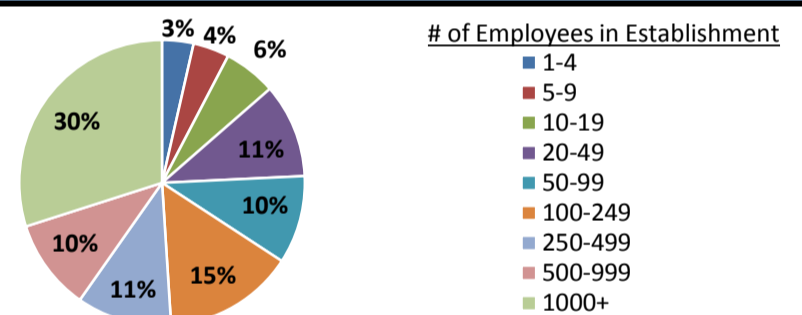
### Historical Unemployment Rates



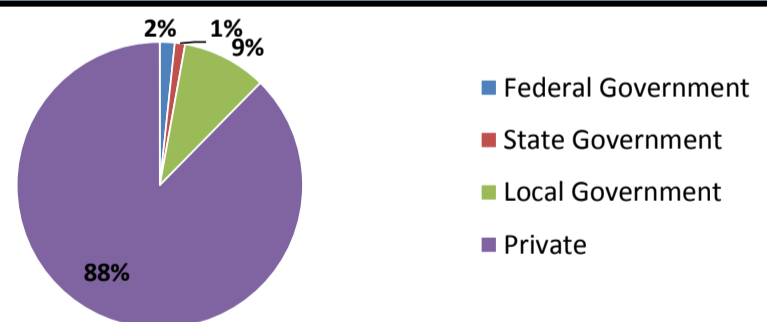
### Projected Fastest Growing Industries in WDA (% growth 2014-2024)



### Employment by Size Class (3rd Quarter 2016)



### Employment by Ownership (3rd Quarter 2016)



### Average Weekly Wage (3rd Quarter 2016)

	Q3 2016	Q2 2016	Q3 2015	Change	
				Quarter	Year
WDA	\$1,029	\$971	\$968	\$58	\$61
Texas	\$1,042	\$1,000	\$999	\$42	\$43
US	\$1,027	\$988	\$974	\$39	\$53

### Employment by Industry (3rd Quarter 2016, Percent Change)

Industry	Employment	% of total	% Change	
			Quarter	Year
Natural resources and mining	8,159	1.0%	-4.8%	-16.7%
Construction	49,447	5.8%	2.7%	8.2%
Manufacturing	80,956	9.4%	0.7%	-1.7%
Trade, transportation and utilities	216,881	25.3%	1.9%	3.6%
Information	10,746	1.3%	-2.8%	-3.9%
Financial activities	52,607	6.1%	0.9%	2.7%
Professional and business services	100,905	11.8%	1.0%	-0.7%
Education and health services	177,709	20.7%	-3.1%	2.2%
Leisure and hospitality	106,307	12.4%	0.2%	2.3%
Other services	25,408	3.0%	-0.9%	-2.7%
Public administration	27,761	3.2%	0.3%	2.3%
<b>Total</b>	<b>856,886</b>	<b>100.0%</b>	<b>0.1%</b>	<b>1.7%</b>

### Employment by Industry (3rd Quarter 2016)

