

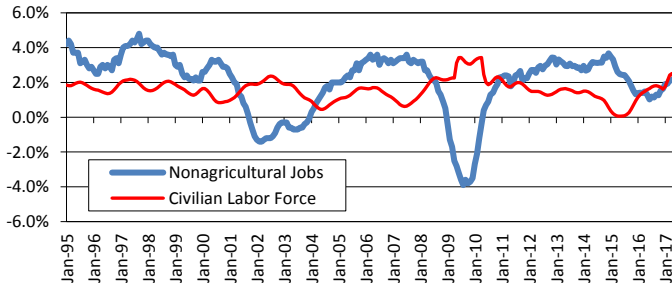
Texas Nonagricultural Employment Summary

Total Nonagricultural Wage and Salary Employment grew by 14,800 jobs in May and marked 11 consecutive months of employment growth. Both the Goods Producing and the Service Providing sectors added jobs over the month, with the Goods Producing sector returning to the more robust growth experienced earlier in the year with 11,800 jobs added in May. Annually, Total Nonfarm employment growth exceeded the pace set last year, with 266,600 positions added since May 2016. This contributed to 85 consecutive months of yearly employment gains.

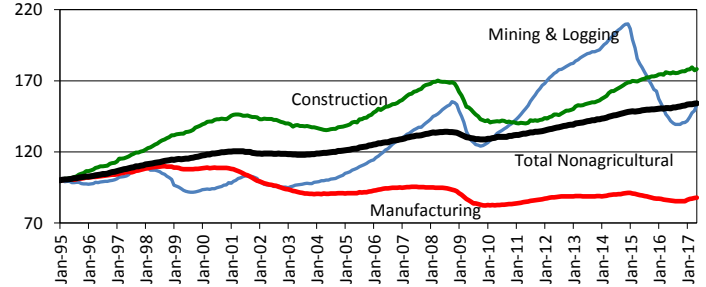
Texas Labor Force Summary

Texas' seasonally adjusted unemployment rate was 4.8 percent in May, down two-tenths of a percentage point from April. The U.S. rate decreased by one-tenth of a percentage point to 4.3 percent. The state's labor force participation rate in May decreased to 63.9 percent, down from 64.1 percent in April. Over the year, the Civilian Labor Force has expanded by over 295,000 Texans. This marks a 2.2 percent increase. The number of employed Texans decreased by 2,000 over the month; this is the first over-the-month decrease in 97 consecutive months.

Total Nonagricultural Jobs vs. Civilian Labor Force (Over-the-Year Percent Change)



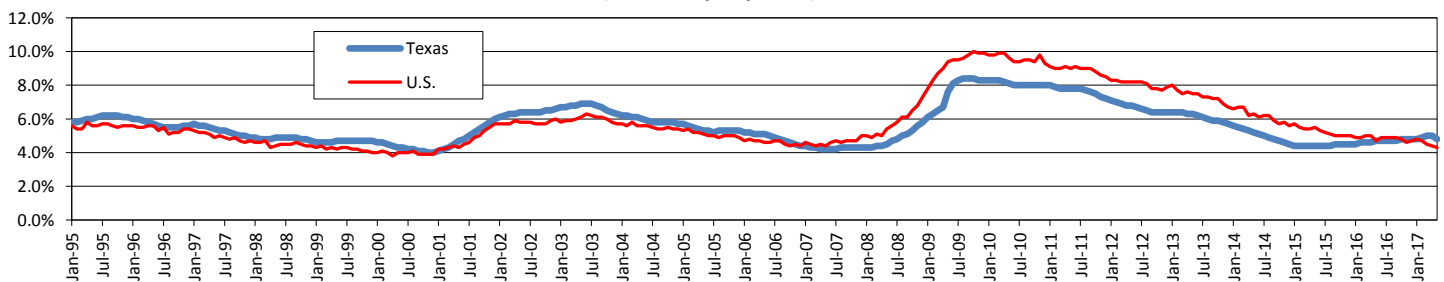
Goods Producing Sector Index, 1995=100



TEXAS NONAGRICULTURAL WAGE AND SALARY EMPLOYMENT SEASONALLY ADJUSTED

INDUSTRY TITLE	May 2017	Apr 2017	May 2016	Apr '17 to May '17		May '16 to May '17	
				Absolute Change	Percent Change	Absolute Change	Percent Change
Total Nonagricultural	12,261,500	12,246,700	11,994,900	14,800	0.1	266,600	2.2
Total Private	10,308,300	10,297,200	10,075,100	11,100	0.1	233,200	2.3
Goods-Producing	1,813,700	1,801,900	1,769,900	11,800	0.7	43,800	2.5
Mining and Logging	235,900	229,300	221,800	6,600	2.9	14,100	6.4
Construction	711,300	707,900	700,700	3,400	0.5	10,600	1.5
Manufacturing	866,500	864,700	847,400	1,800	0.2	19,100	2.3
Service-Providing	10,447,800	10,444,800	10,225,000	3,000	0.0	222,800	2.2
Trade, Transportation, and Utilities	2,443,200	2,444,200	2,414,000	-1,000	0.0	29,200	1.2
Information	192,700	193,600	202,100	-900	-0.5	-9,400	-4.7
Financial Activities	752,100	748,900	731,000	3,200	0.4	21,100	2.9
Professional and Business Services	1,671,300	1,673,700	1,620,800	-2,400	-0.1	50,500	3.1
Education and Health Services	1,674,600	1,678,600	1,624,900	-4,000	-0.2	49,700	3.1
Leisure and Hospitality	1,322,700	1,320,700	1,285,500	2,000	0.2	37,200	2.9
Other Services	438,000	435,600	426,900	2,400	0.6	11,100	2.6
Government	1,953,200	1,949,500	1,919,800	3,700	0.2	33,400	1.7

Texas and U.S. Unemployment Rates (Seasonally Adjusted)



TEXAS AND U.S. CIVILIAN LABOR FORCE ESTIMATES (Seasonally Adjusted)

	TEXAS				UNITED STATES				
	CLF	EMP	UNEMP	RATE	CLF	EMP	UNEMP	RATE	
May '17	13,526,400	12,870,500	656,000	4.8	May '17	159,784,000	152,923,000	6,861,000	4.3
Apr '17	13,548,800	12,872,500	676,300	5.0	Apr '17	160,213,000	153,156,000	7,056,000	4.4
May '16	13,231,300	12,615,700	615,600	4.7	May '16	158,510,000	151,058,000	7,451,000	4.7