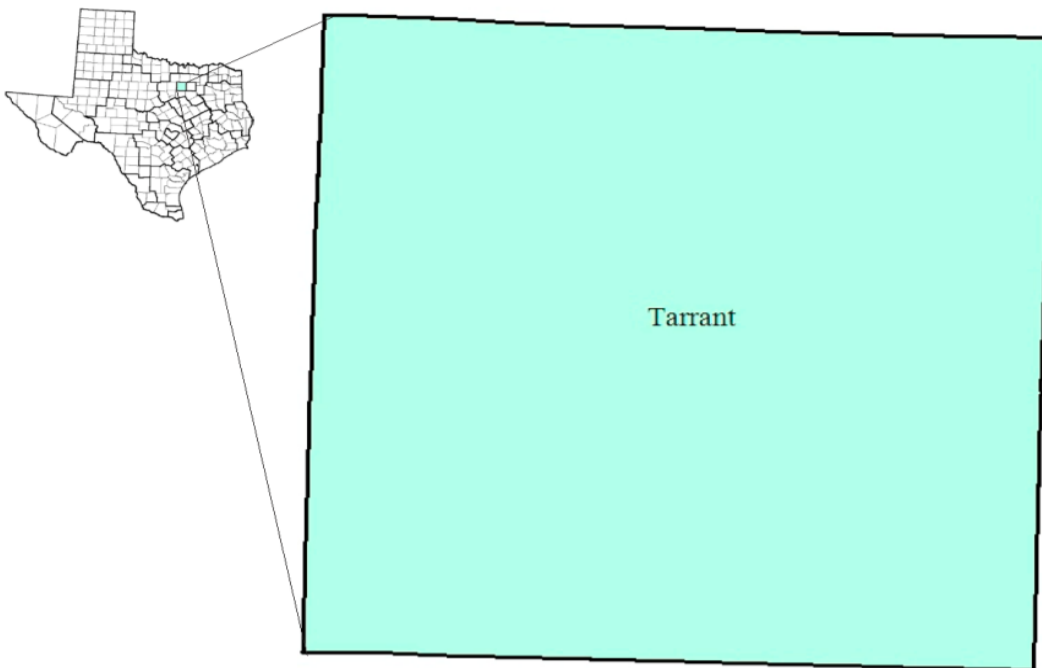


Tarrant County Workforce Development Area

November 2017



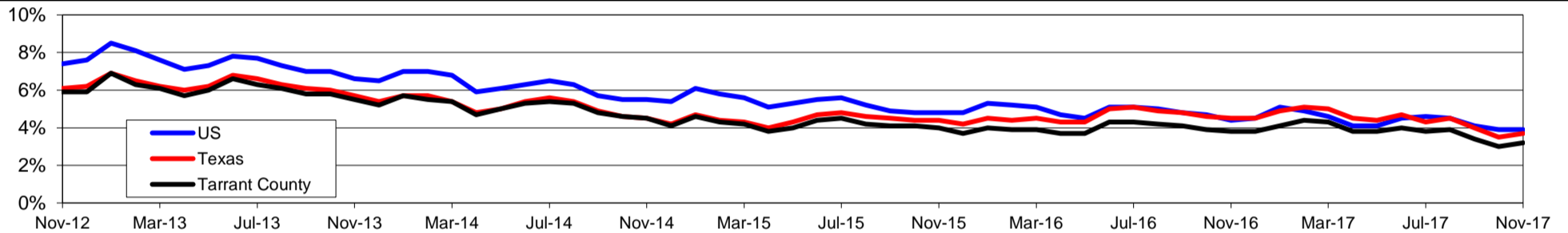
WDA Labor Force Statistics				
	Nov-17	Oct-17	Nov-16	OTY
CLF	1,038,041	1,029,697	1,019,705	18,336
Employed	1,005,045	998,712	981,286	23,759
Unemployed	32,996	30,985	38,419	-5,423
Rate	3.2%	3.0%	3.8%	-0.6%

Texas Labor Force Statistics				
	Nov-17	Oct-17	Nov-16	OTY
CLF	13,501,846	13,392,522	13,371,089	130,757
Employed	13,002,576	12,922,849	12,771,219	231,357
Unemployed	499,270	469,673	599,870	-100,600
Rate	3.7%	3.5%	4.5%	-0.8%

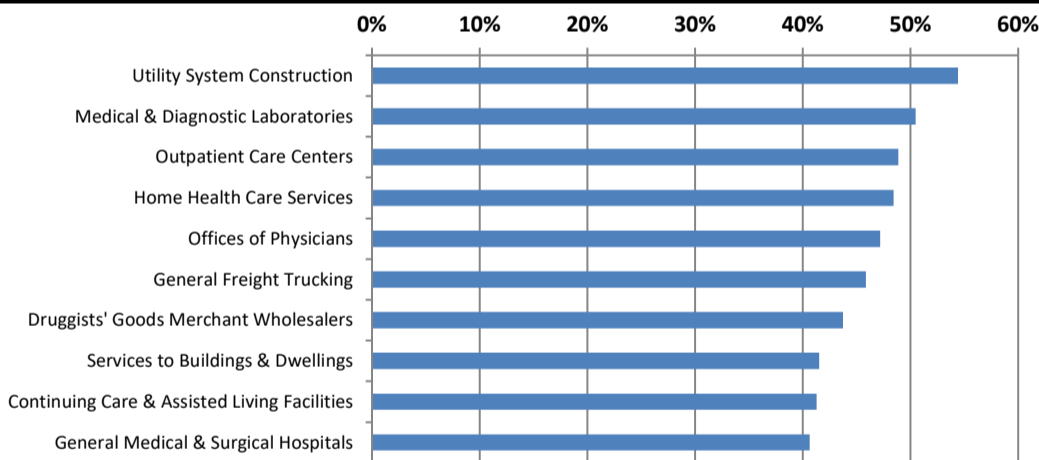
US Labor Force Statistics				
	Nov-17	Oct-17	Nov-16	OTY
CLF	160,466,000	160,465,000	159,451,000	1,015,000
Employed	154,180,000	154,223,000	152,385,000	1,795,000
Unemployed	6,286,000	6,242,000	7,066,000	-780,000
Rate	3.9%	3.9%	4.4%	-0.5%

Continued Claims for the Week of the 12th				
	Nov-17	Oct-17	Nov-16	OTY
WDA	6,604	6,861	7,359	-755
Texas	104,499	105,966	126,982	-22,483

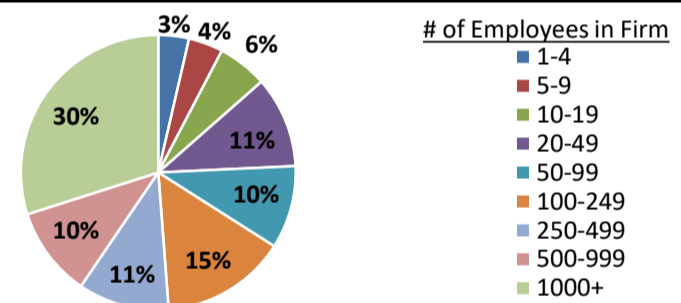
Historical Unemployment Rates



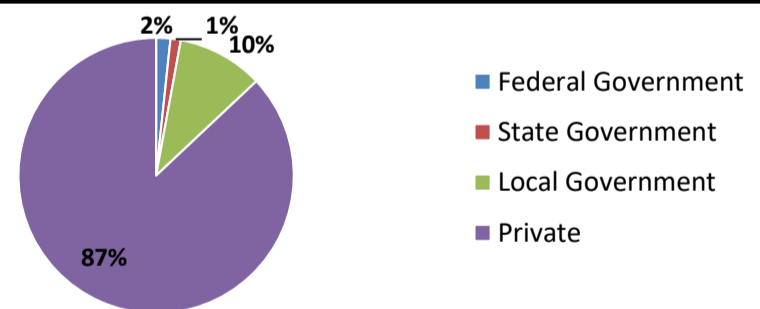
Projected Fastest Growing Industries in WDA (% growth 2014-2024)



Employment by Size Class (2nd Quarter 2017)



Employment by Ownership (2nd Quarter 2017)



Average Weekly Wage (2nd Quarter 2017)

	Q2 2017	Q1 2017	Q2 2016	Change	
				Quarter	Year
WDA	\$1,009	\$1,063	\$972	-\$54	\$37
Texas	\$1,026	\$1,124	\$1,000	-\$99	\$25
US	N/A	\$1,111	\$988	N/A	N/A

Employment by Industry (2nd Quarter 2017, Percent Change)

Industry	Employment	% of total	% Change	
			Quarter	Year
Natural resources and mining	8,523	1.0%	2.8%	-0.6%
Construction	51,006	5.8%	3.8%	5.9%
Manufacturing	81,520	9.3%	1.1%	1.4%
Trade, transportation and utilities	218,457	25.0%	0.6%	2.6%
Information	10,649	1.2%	1.9%	-3.8%
Financial activities	54,281	6.2%	2.5%	4.1%
Professional and business services	98,794	11.3%	0.9%	-1.1%
Education and health services	188,250	21.6%	0.5%	2.6%
Leisure and hospitality	107,504	12.3%	5.3%	2.3%
Other services	25,403	2.9%	2.3%	-0.5%
Public administration	27,834	3.2%	-0.5%	0.6%
Total	872,221	100.0%	1.6%	2.0%

Employment by Industry (2nd Quarter 2017)

