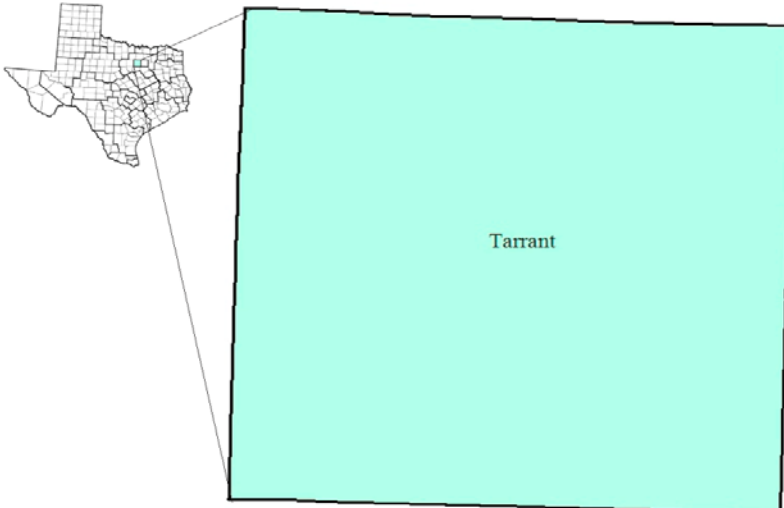


# Tarrant County Workforce Development Area

March 2018



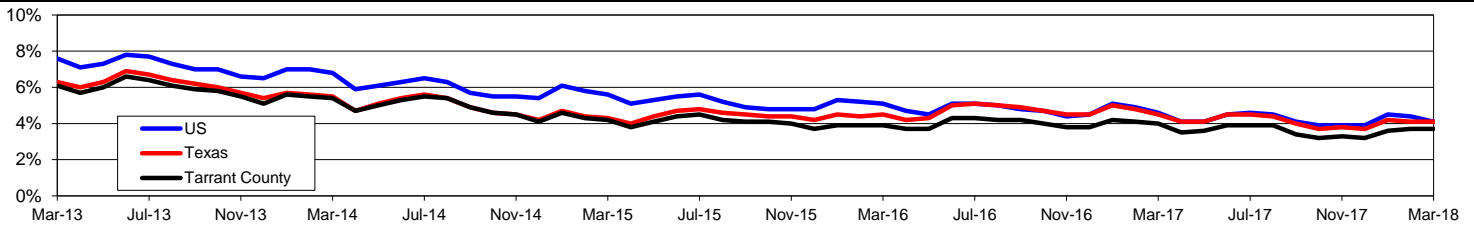
WDA Labor Force Statistics				
	Mar-18	Feb-18	Mar-17	OTY
CLF	1,053,714	1,053,389	1,025,975	27,739
Employed	1,014,547	1,014,880	985,358	29,189
Unemployed	39,167	38,509	40,617	-1,450
Rate	3.7%	3.7%	4.0%	-0.3%

Texas Labor Force Statistics				
	Mar-18	Feb-18	Mar-17	OTY
CLF	13,834,783	13,810,899	13,517,746	317,037
Employed	13,265,346	13,240,944	12,904,419	360,927
Unemployed	569,437	569,955	613,327	-43,890
Rate	4.1%	4.1%	4.5%	-0.4%

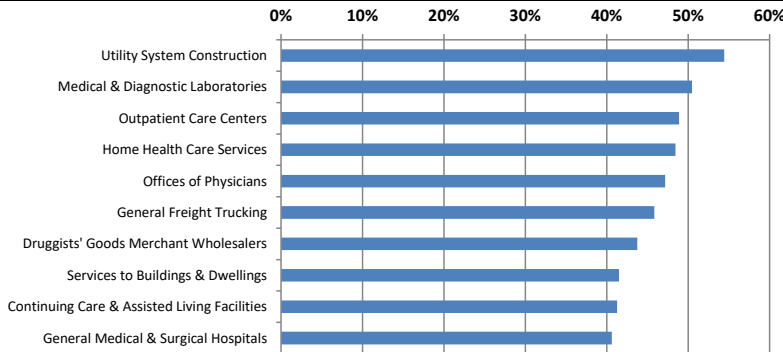
US Labor Force Statistics				
	Mar-18	Feb-18	Mar-17	OTY
CLF	161,548,000	161,494,000	159,912,000	1,636,000
Employed	154,877,000	154,403,000	152,628,000	2,249,000
Unemployed	6,671,000	7,091,000	7,284,000	-613,000
Rate	4.1%	4.4%	4.6%	-0.5%

Continued Claims for the Week of the 12th				
	Mar-18	Feb-18	Mar-17	OTY
WDA	7,402	7,155	8,180	-778
Texas	101,803	104,413	122,322	-20,519

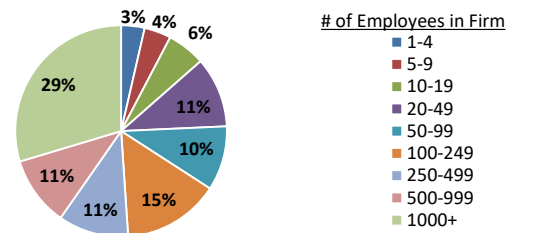
## Historical Unemployment Rates



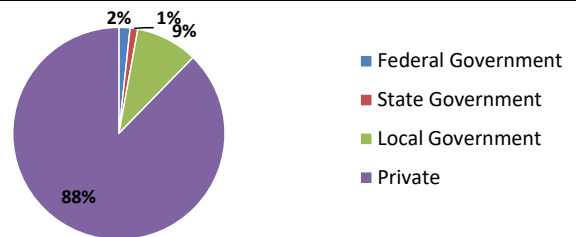
## Projected Fastest Growing Industries in WDA (% growth 2014-2024)



## Employment by Size Class (3rd Quarter 2017)



## Employment by Ownership (3rd Quarter 2017)



## Average Weekly Wage (3rd Quarter 2017)

	Q3 2017	Q2 2017	Q3 2016	Change	
				Quarter	Year
WDA	\$1,000	\$1,010	\$1,029	-\$10	-\$29
Texas	\$1,032	\$1,027	\$1,042	\$5	-\$10
US	\$1,021	\$1,020	\$1,027	\$1	-\$6

## Employment by Industry (3rd Quarter 2017, Percent Change)

Industry	Employment	% of total	% Change	
			Quarter	Year
Natural resources and mining	8,551	1.0%	0.3%	4.9%
Construction	51,492	5.9%	1.0%	4.1%
Manufacturing	82,422	9.4%	1.1%	1.8%
Trade, transportation and utilities	220,697	25.2%	1.3%	1.7%
Information	10,485	1.2%	-1.5%	-2.6%
Financial activities	54,466	6.2%	1.5%	3.5%
Professional and business services	100,866	11.5%	1.8%	-0.2%
Education and health services	183,364	21.0%	-2.6%	2.8%
Leisure and hospitality	108,451	12.4%	0.8%	2.9%
Other services	25,274	2.9%	-0.6%	-0.2%
Public administration	28,013	3.2%	0.6%	0.8%
<b>Total</b>	<b>874,081</b>	<b>100.0%</b>	<b>0.3%</b>	<b>2.0%</b>

## Employment by Industry (3rd Quarter 2017)

