

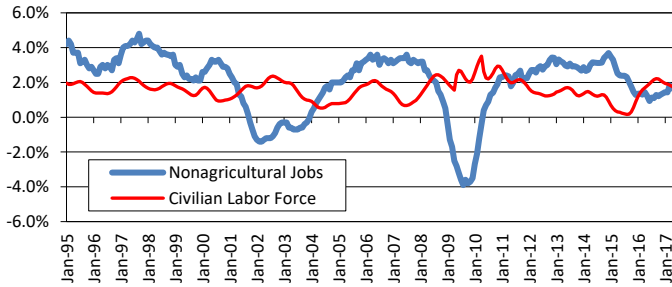
**Texas Nonagricultural Employment Summary**

Total Nonagricultural Wage and Salary employment grew by 32,000 jobs in March following a revised increase of 49,800 jobs in February. Employment growth since January was nearly double the amount of jobs added in 2017 over the same time frame. Both the Goods Producing and Service Providing sectors added jobs over the month, with Goods Producing sector jobs increasing in 14 out of the previous 15 months. Total Nonfarm annual growth remained unchanged at 2.4 percent and has remained above 2.0 percent for five consecutive months.

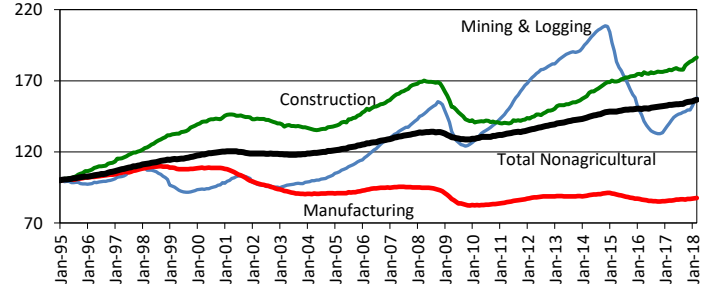
**Texas Labor Force Summary**

The Texas seasonally adjusted unemployment rate held steady at 4.0 percent in March, and the rate has fallen 0.6 percentage points over the year. The U.S. rate remained steady at 4.1 percent in March and has fallen 0.4 percentage points over the year. The Texas Civilian Labor Force grew by 45,500 persons in March for a third consecutive month of expansion. The number of employed increased by 37,300 workers, while the number of unemployed rose by 8,300 persons. The Texas CLF grew by 211,600 persons over the year.

**Total Nonagricultural Jobs vs. Civilian Labor Force (Over-the-Year Percent Change)**



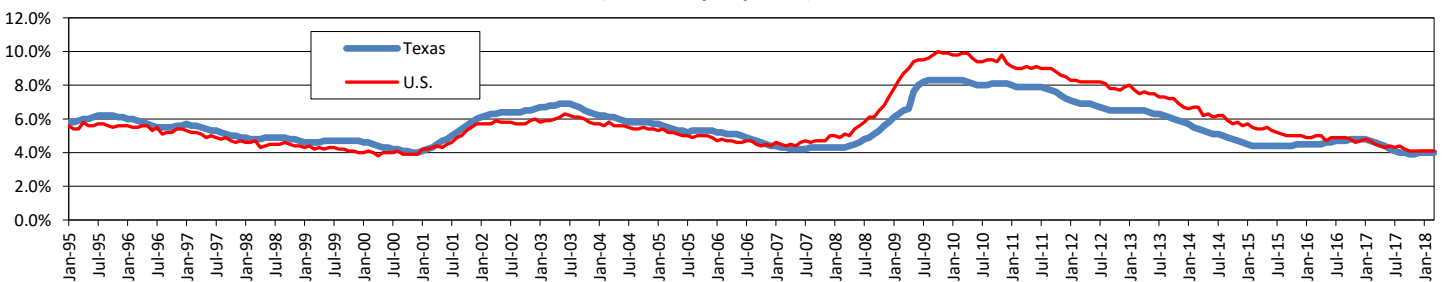
**Goods Producing Sector Index, 1995=100**



**TEXAS NONAGRICULTURAL WAGE AND SALARY EMPLOYMENT SEASONALLY ADJUSTED**

INDUSTRY TITLE	Mar 2018	Feb 2018	Mar 2017	Feb '18 to Mar '18		Mar '17 to Mar '18	
				Absolute Change	Percent Change	Absolute Change	Percent Change
<b>Total Nonagricultural</b>	<b>12,463,700</b>	<b>12,431,700</b>	<b>12,169,600</b>	<b>32,000</b>	<b>0.3</b>	<b>294,100</b>	<b>2.4</b>
<b>Total Private</b>	<b>10,518,000</b>	<b>10,487,400</b>	<b>10,228,900</b>	<b>30,600</b>	<b>0.3</b>	<b>289,100</b>	<b>2.8</b>
<b>Goods-Producing</b>	<b>1,851,800</b>	<b>1,841,200</b>	<b>1,771,200</b>	<b>10,600</b>	<b>0.6</b>	<b>80,600</b>	<b>4.6</b>
Mining and Logging	243,000	239,300	215,200	3,700	1.5	27,800	12.9
Construction	744,000	740,200	710,000	3,800	0.5	34,000	4.8
Manufacturing	864,800	861,700	846,000	3,100	0.4	18,800	2.2
<b>Service-Providing</b>	<b>10,611,900</b>	<b>10,590,500</b>	<b>10,398,400</b>	<b>21,400</b>	<b>0.2</b>	<b>213,500</b>	<b>2.1</b>
Trade, Transportation, and Utilities	2,497,300	2,489,800	2,443,500	7,500	0.3	53,800	2.2
Information	199,500	200,200	203,600	-700	-0.3	-4,100	-2.0
Financial Activities	770,200	769,500	749,400	700	0.1	20,800	2.8
Professional and Business Services	1,726,900	1,720,700	1,658,900	6,200	0.4	68,000	4.1
Education and Health Services	1,686,000	1,683,900	1,662,900	2,100	0.1	23,100	1.4
Leisure and Hospitality	1,352,600	1,352,100	1,311,900	500	0.0	40,700	3.1
Other Services	433,700	430,000	427,500	3,700	0.9	6,200	1.5
Government	1,945,700	1,944,300	1,940,700	1,400	0.1	5,000	0.3

**Texas and U.S. Unemployment Rates (Seasonally Adjusted)**



**TEXAS AND U.S. CIVILIAN LABOR FORCE ESTIMATES (Seasonally Adjusted)**

	TEXAS				UNITED STATES				
	CLF	EMP	UNEMP	RATE	CLF	EMP	UNEMP	RATE	
<b>Mar '18</b>	13,702,600	13,150,300	552,400	4.0	<b>Mar '18</b>	161,763,000	155,178,000	6,585,000	4.1
<b>Feb '18</b>	13,657,100	13,113,000	544,100	4.0	<b>Feb '18</b>	161,921,000	155,215,000	6,706,000	4.1
<b>Mar '17</b>	13,491,000	12,865,500	625,400	4.6	<b>Mar '17</b>	160,201,000	153,000,000	7,202,000	4.5