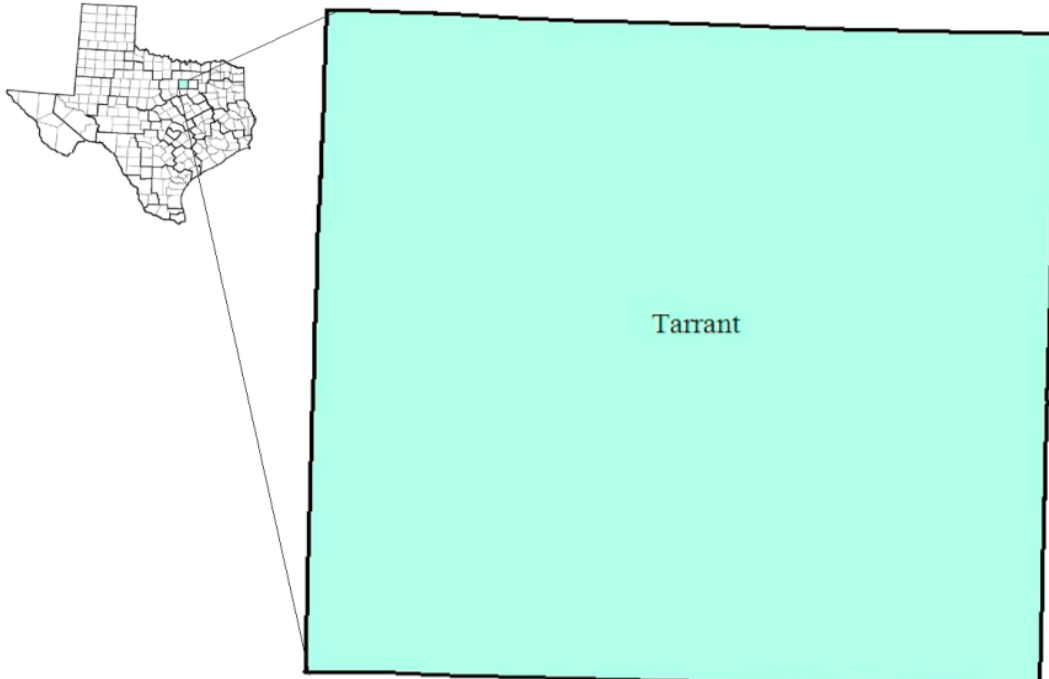


# Tarrant County Workforce Development Area

May 2018



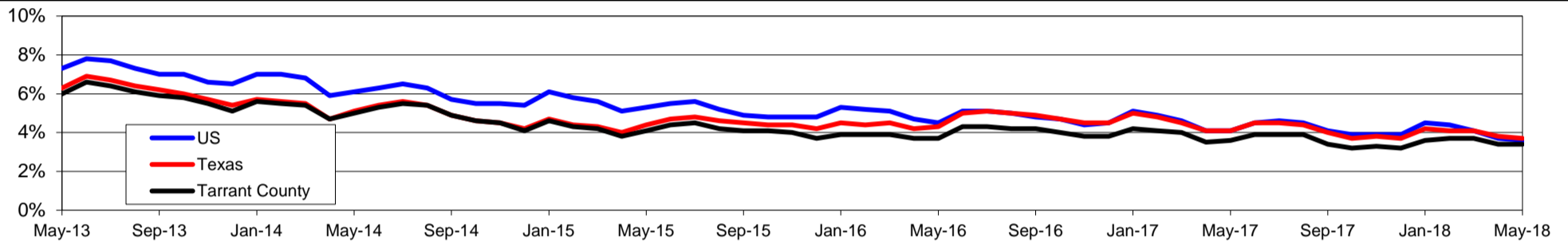
WDA Labor Force Statistics				
	May-18	Apr-18	May-17	OTY
CLF	1,059,388	1,059,494	1,025,923	33,465
Employed	1,023,616	1,023,911	989,157	34,459
Unemployed	35,772	35,583	36,766	-994
Rate	3.4%	3.4%	3.6%	-0.2%

Texas Labor Force Statistics				
	May-18	Apr-18	May-17	OTY
CLF	13,836,477	13,863,075	13,498,726	337,751
Employed	13,321,229	13,342,454	12,940,819	380,410
Unemployed	515,248	520,621	557,907	-42,659
Rate	3.7%	3.8%	4.1%	-0.4%

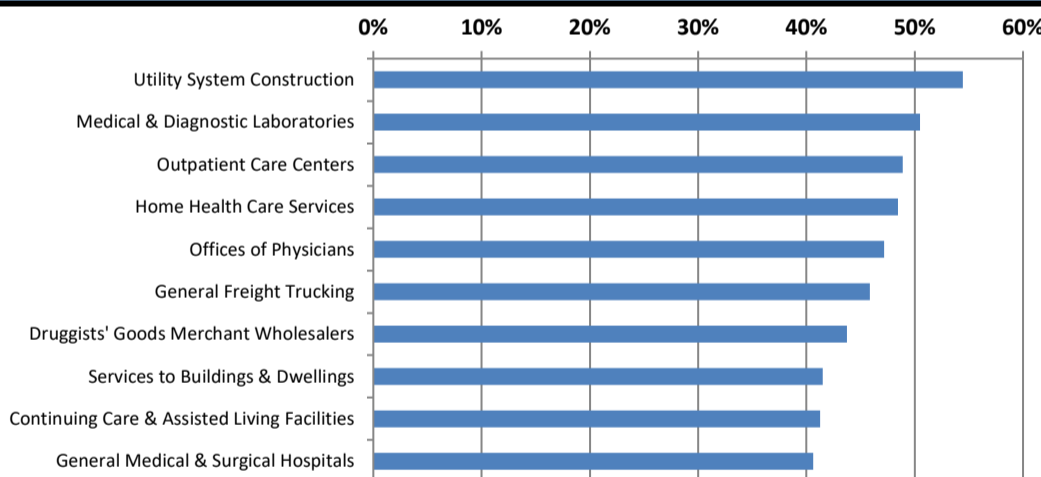
US Labor Force Statistics				
	May-18	Apr-18	May-17	OTY
CLF	161,765,000	161,280,000	159,979,000	1,786,000
Employed	156,009,000	155,348,000	153,407,000	2,602,000
Unemployed	5,756,000	5,932,000	6,572,000	-816,000
Rate	3.6%	3.7%	4.1%	-0.5%

Continued Claims for the Week of the 12th				
	May-18	Apr-18	May-17	OTY
WDA	6,828	6,817	7,363	-535
Texas	93,184	96,035	113,603	-20,419

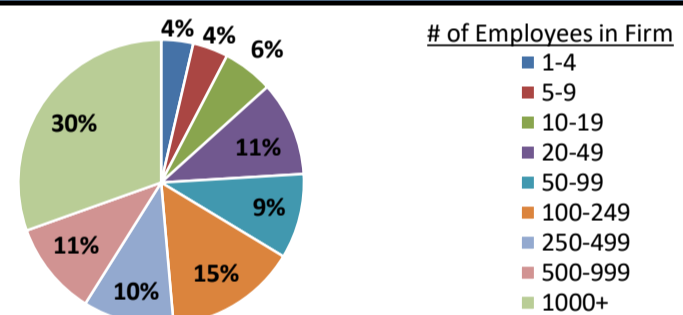
## Historical Unemployment Rates



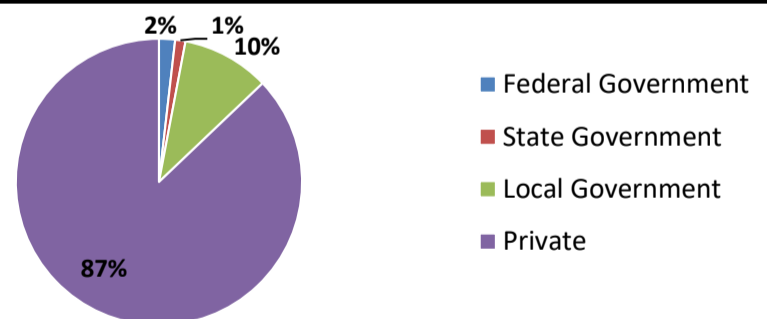
## Projected Fastest Growing Industries in WDA (% growth 2014-2024)



## Employment by Size Class (4th Quarter 2017)



## Employment by Ownership (4th Quarter 2017)



## Average Weekly Wage (4th Quarter 2017)

	Q4 2017	Q3 2017	Q4 2016	Change	
				Quarter	Year
WDA	\$1,075	\$1,000	\$1,028	\$75	\$47
Texas	\$1,109	\$1,032	\$1,072	\$77	\$37
US	\$1,065	\$1,020	\$1,067	\$45	-\$2

## Employment by Industry (4th Quarter 2017, Percent Change)

Industry	Employment	% of total	% Change	
			Quarter	Year
Natural resources and mining	8,426	0.9%	-1.5%	3.0%
Construction	51,340	5.8%	-0.4%	4.1%
Manufacturing	83,055	9.3%	0.7%	2.7%
Trade, transportation and utilities	227,683	25.6%	3.0%	1.3%
Information	10,343	1.2%	-1.4%	-2.1%
Financial activities	54,840	6.2%	0.5%	2.5%
Professional and business services	102,126	11.5%	1.3%	0.6%
Education and health services	191,451	21.5%	4.4%	3.2%
Leisure and hospitality	105,227	11.8%	-3.0%	3.3%
Other services	24,740	2.8%	-2.1%	-0.9%
Public administration	29,192	3.3%	4.2%	3.7%
<b>Total</b>	<b>888,423</b>	<b>100.0%</b>	<b>1.6%</b>	<b>2.2%</b>

## Employment by Industry (4th Quarter 2017)

