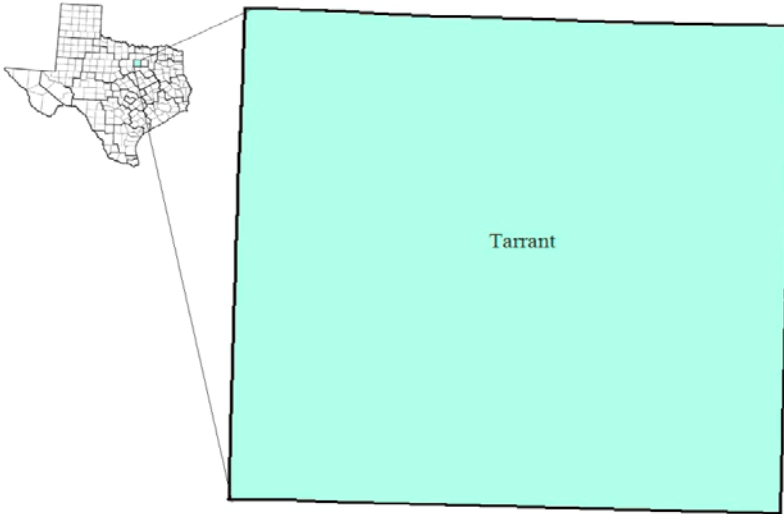


Tarrant County Workforce Development Area

September 2018



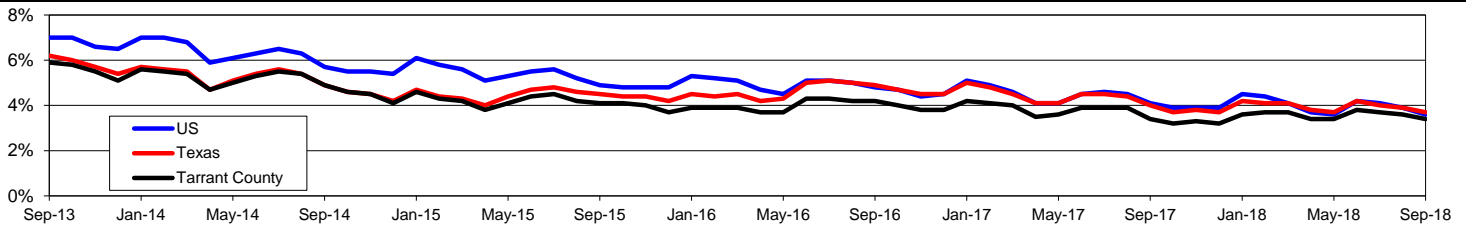
WDA Labor Force Statistics				
	Sep-18	Aug-18	Sep-17	OTY
CLF	1,058,187	1,054,408	1,046,095	12,092
Employed	1,021,980	1,016,551	1,010,526	11,454
Unemployed	36,207	37,857	35,569	638
Rate	3.4%	3.6%	3.4%	0.0%

Texas Labor Force Statistics				
	Sep-18	Aug-18	Sep-17	OTY
CLF	13,802,300	13,750,098	13,619,456	182,844
Employed	13,285,696	13,210,695	13,070,608	215,088
Unemployed	516,604	539,403	548,848	-32,244
Rate	3.7%	3.9%	4.0%	-0.3%

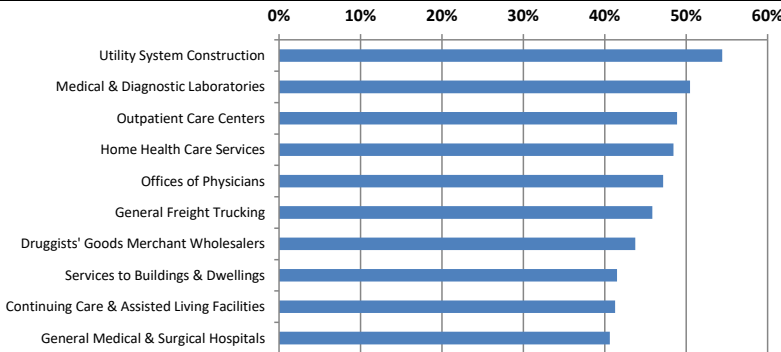
US Labor Force Statistics				
	Sep-18	Aug-18	Sep-17	OTY
CLF	161,958,000	161,909,000	161,049,000	909,000
Employed	156,191,000	155,539,000	154,494,000	1,697,000
Unemployed	5,766,000	6,370,000	6,556,000	-790,000
Rate	3.6%	3.9%	4.1%	-0.5%

Continued Claims for the Week of the 12th				
	Sep-18	Aug-18	Sep-17	OTY
WDA	6,724	7,480	7,966	-1,242
Texas	82,598	93,001	115,057	-32,459

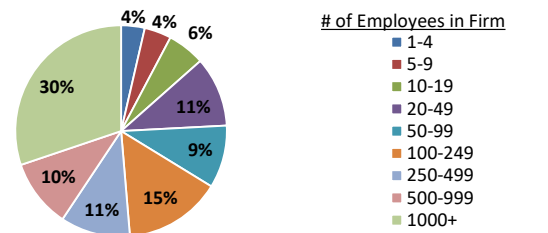
Historical Unemployment Rates



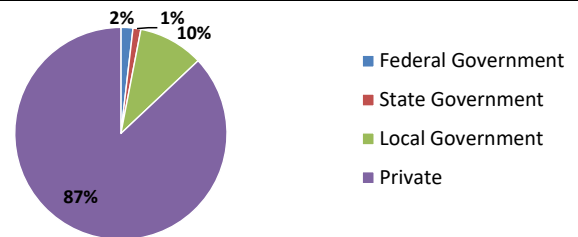
Projected Fastest Growing Industries in WDA (% growth 2014-2024)



Employment by Size Class (1st Quarter 2018)



Employment by Ownership (1st Quarter 2018)



Average Weekly Wage (1st Quarter 2018)

	Q1 2018	Q4 2017	Q1 2017	Change	
				Quarter	Year
WDA	\$1,107	\$1,075	\$1,063	\$32	\$44
Texas	\$1,167	\$1,109	\$1,124	\$58	\$42
US	\$1,152	\$1,109	\$1,111	\$43	\$41

Employment by Industry (1st Quarter 2018, Percent Change)

Industry	Employment	% of total	% Change	
			Quarter	Year
Natural resources and mining	8,066	0.9%	-4.3%	-2.7%
Construction	50,011	5.7%	-2.8%	1.8%
Manufacturing	84,086	9.5%	1.2%	4.3%
Trade, transportation and utilities	222,221	25.1%	-1.9%	2.3%
Information	10,419	1.2%	0.7%	-0.3%
Financial activities	54,335	6.1%	-1.1%	2.6%
Professional and business services	102,412	11.6%	0.2%	4.6%
Education and health services	192,265	21.8%	0.3%	2.6%
Leisure and hospitality	105,830	12.0%	0.5%	3.6%
Other services	24,820	2.8%	0.0%	-0.1%
Public administration	29,270	3.3%	0.3%	4.6%
Total	883,735	100.0%	-0.5%	2.9%

Employment by Industry (1st Quarter 2018)

