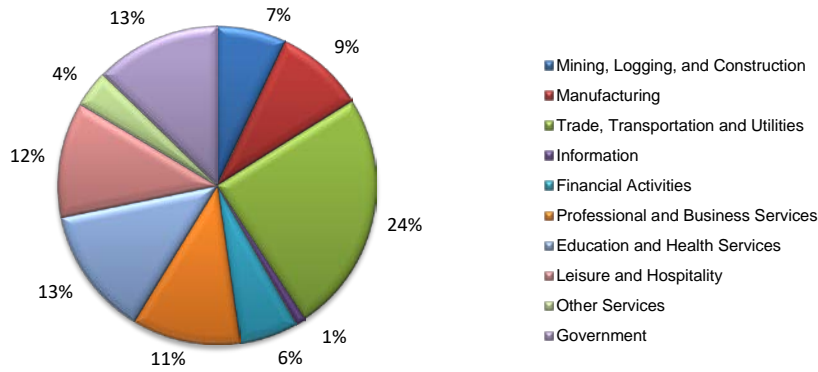
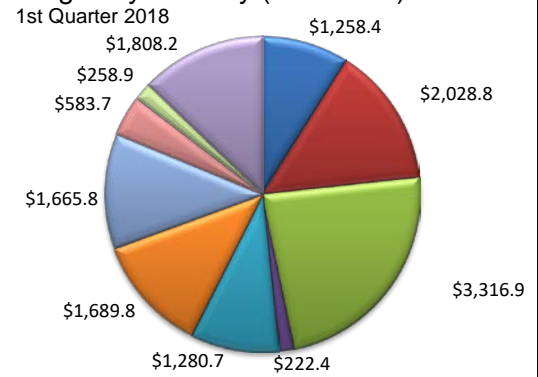


(Hood, Johnson, Parker, Somervell, Tarrant, Wise)

Industry Composition



Wages by Industry (in millions)



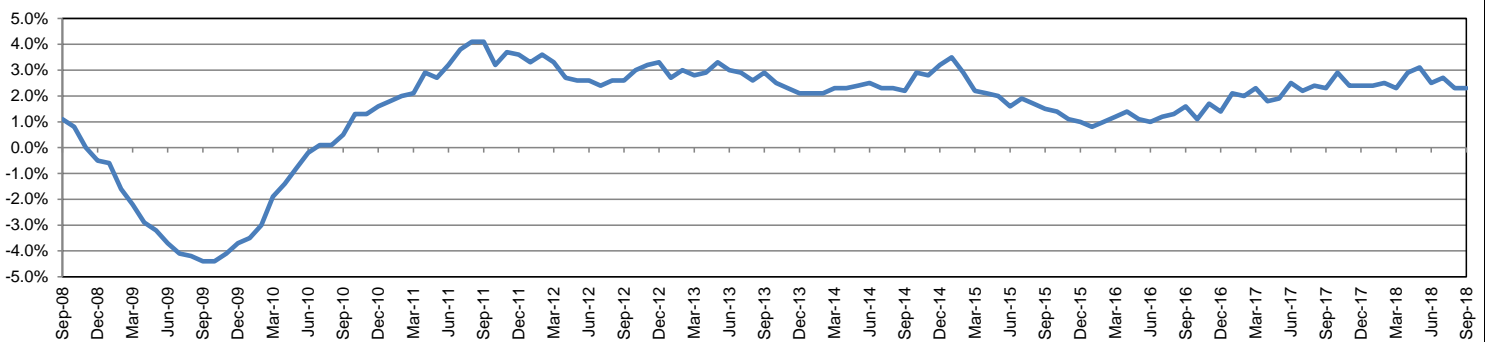
Employment by Industry

				Monthly Change		Annual Change	
	Sep-18	Aug-18	Sep-17	Actual	%	Actual	%
<b>Total Nonfarm</b>	<b>1,059,000</b>	<b>1,055,700</b>	<b>1,035,500</b>	<b>3,300</b>	<b>0.3%</b>	<b>23,500</b>	<b>2.3%</b>
Mining, Logging and Construction	74,100	76,600	74,600	-2,500	-3.3%	-500	-0.7%
Manufacturing	96,300	96,600	94,700	-300	-0.3%	1,600	1.7%
Trade, Transportation, and Utilities	261,100	260,200	254,200	900	0.3%	6,900	2.7%
Information	10,800	11,000	11,200	-200	-1.8%	-400	-3.6%
Financial Activities	63,000	62,200	60,000	800	1.3%	3,000	5.0%
Professional and Business Services	116,800	116,300	113,000	500	0.4%	3,800	3.4%
Education and Health Services	138,300	138,500	136,000	-200	-0.1%	2,300	1.7%
Leisure and Hospitality	124,000	124,300	118,200	-300	-0.2%	5,800	4.9%
Other Services	39,600	39,900	38,800	-300	-0.8%	800	2.1%
Government	135,000	130,100	134,800	4,900	3.8%	200	0.1%

Industry Size Class

Size Class	Employees per firm	Number of Firms	March 2018	
			Employment in Size Class	% Total Employment
9	1000+	89	287,301	28.5%
8	500-999	164	112,787	11.2%
7	250-499	294	103,538	10.3%
6	100-249	994	151,239	15.0%
5	50-99	1,395	96,606	9.6%
4	20-49	3,644	111,483	11.0%
3	10-19	4,582	61,898	6.1%
2	5-9	6,826	45,199	4.5%
1	1-4	20,089	39,225	3.9%
0	0	4,778	0	0.0%
<b>Total</b>		<b>42,855</b>	<b>1,009,276</b>	<b>100.0%</b>

Annual Growth Rate for Total Nonagricultural Employment



Unemployment Information (all estimates in thousands)

	Fort Worth-Arlington MD				Texas (Actual)				United States (Actual)			
	C.L.F.	Emp.	Unemp.	Rate	C.L.F.	Emp.	Unemp.	Rate	C.L.F.	Emp.	Unemp.	Rate
Sep-18	1,261.9	1,219.0	42.9	3.4	13,802.3	13,285.7	516.6	3.7	161,958.0	156,191.0	5,766.0	3.6
Aug-18	1,257.7	1,212.7	45.0	3.6	13,750.1	13,210.7	539.4	3.9	161,909.0	155,539.0	6,370.0	3.9
Sep-17	1,247.3	1,204.9	42.4	3.4	13,619.5	13,070.6	548.8	4.0	161,049.0	154,494.0	6,556.0	4.1

Historical Unemployment Rates

