

# 2019

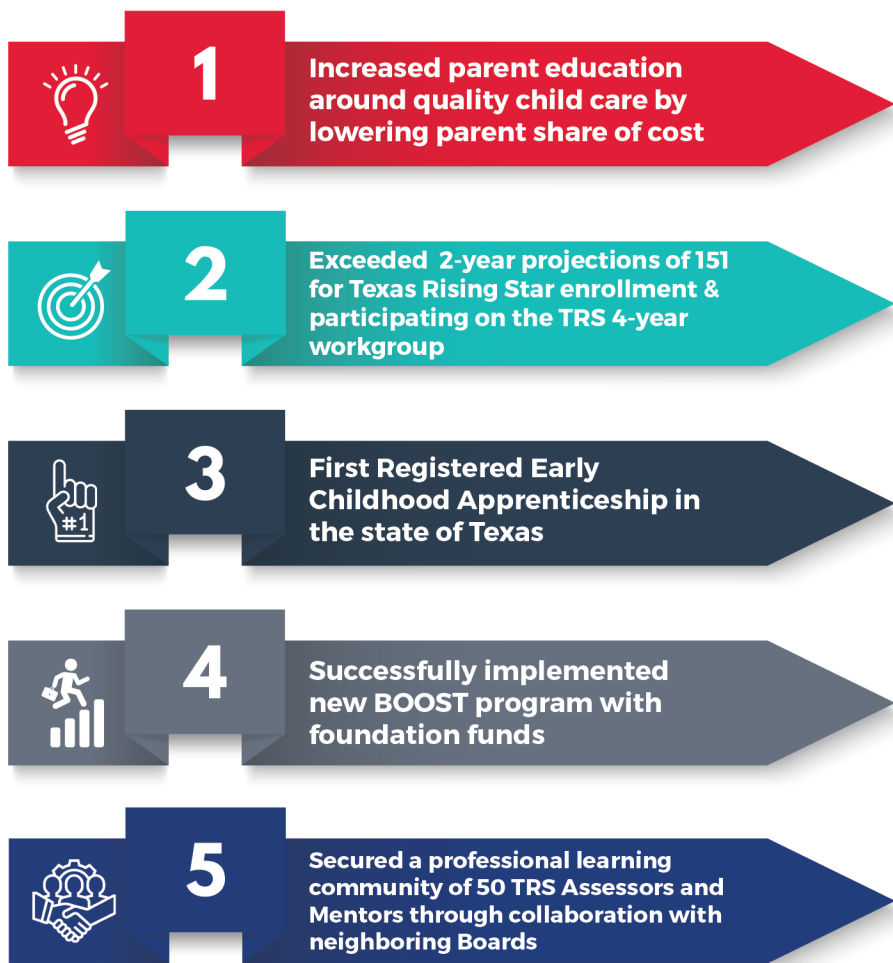
## Workforce Solutions for Tarrant County CHILD CARE COMMITMENT TO QUALITY



### Resources & Impact

Workforce Solutions for Tarrant County applies **\$42,905,044** to the Child Care needs of low income citizens in Tarrant County. Our performance measure for “children served per day” increased from **5526** to **7306**. We are currently serving **6967** children per day this fiscal year.

### Quality Progress



### Texas Rising Star

The Texas Rising Star (TRS) program is a “voluntary, quality-based child care rating system of child care providers participating in the Texas Workforce Commission’s subsidized child care program.” The TRS program went from 120 to 167, which is a 39% increase.



### Early Learning Registry

The Early Learning Registry is an online platform that facilitates the movement of Early Education Professionals along a career pathway by tracking credentials, professional development, and work experiences.



**2316** Active accounts and growing every day  
**18** Total credentials obtained



### BOOST

The BOOST program is a collaboration with providers who need assistance in meeting licensing child care standards and developing systems that promote effective business and program management. The program is designed to work jointly with providers in creating a pipeline to the TRS program.

**50** providers participating in the program  
**12** providers transitioned to the TRS program

### CLASS Data

The Classroom Assessment Scoring System (CLASS) is an observation instrument that assesses the quality of teacher-child interactions in early learning classrooms.

**556** total classrooms observed  
**5746** total children observed

